

Rapid Housing Effort

Lessons Learned and Recommendations

June 21, 2018

Abbreviated/Updated version – Presented to the City Council Select Committee on Homelessness on February 5, 2018



San Diego

Today

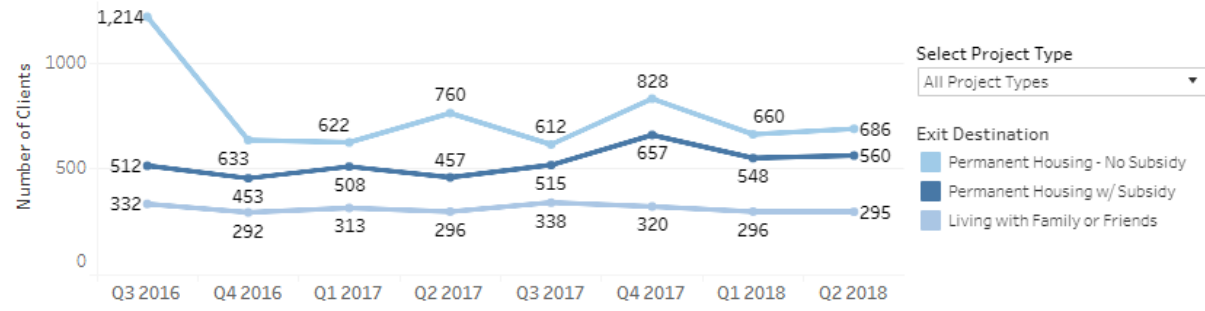
Interim/Bridge Housing, CES, some housing being built, City/County landlord engagement, and provider network trying to find rentals with RRH and PSH vouchers

Future

Enough Affordable and Supportive Housing Built, functioning crisis response system



Client Exits to Permanent Housing Destinations



Currently working hard but not bending the curve!



San Diego Question?

In the meantime we can either...

1. Create more shelter/temp solutions and continue to chip away at housing people

OR

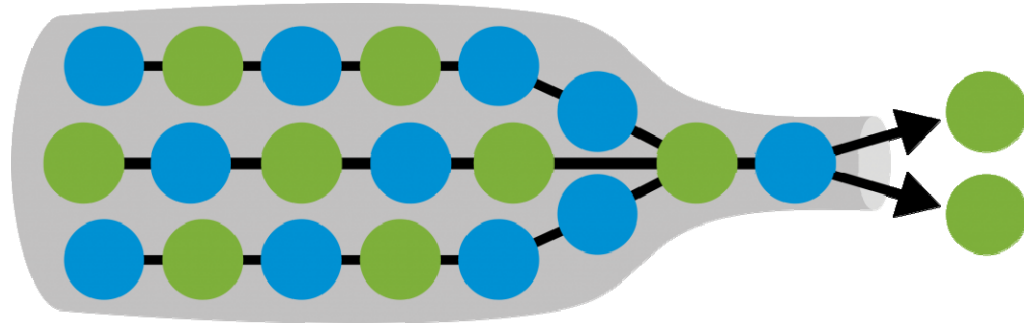
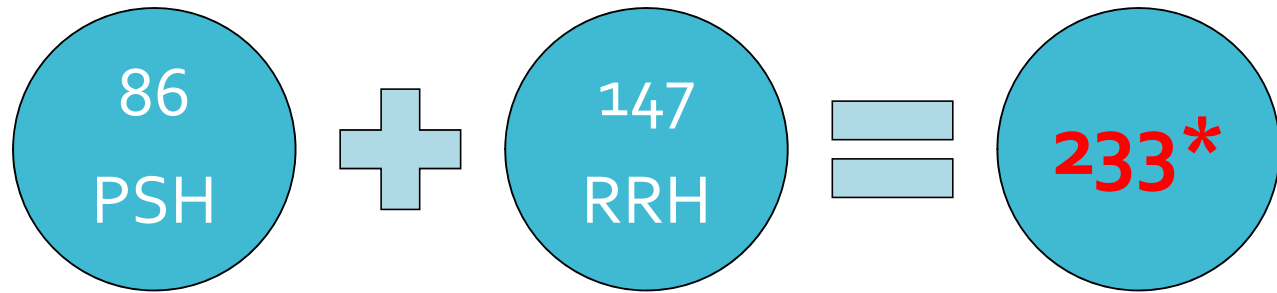
2. Figure out creative ways to impact existing rental market and start bending the curve

(While putting a strong focus on building housing and other housing production strategies)



Rapid Housing
Target
Population:

Households with
Rental Assistance
Resource but
NO UNIT
in Community



Biggest BOTTLENECK in our System!!!
(System = Collective effort to address homelessness from start to finish)

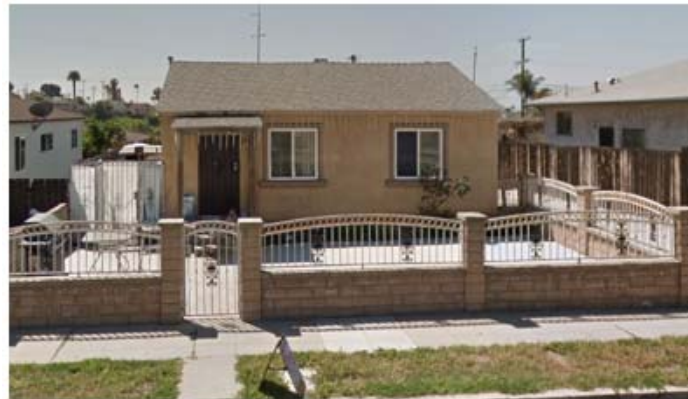
* Only includes Households who are working with participating agencies including Alpha Project, Catholic Charities, Father Joe's Villages, PATH, Salvation Army, SDHC, St. Paul's PACE, Veterans Community Services, and Veterans Village of San Diego



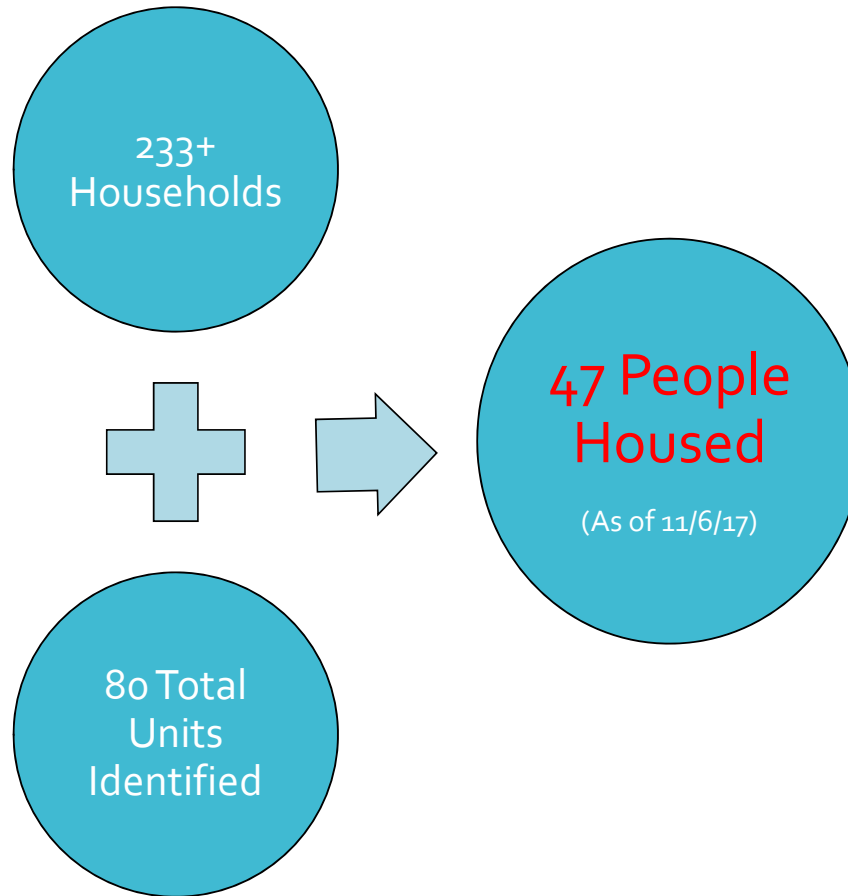
Rapid Housing Month

A Process to Access Tough Rental Market

- Weekly “Unit Conferencing” with providers and SDHC
- Created process for providers to follow to lease up units to households in RRH or PSH
- Communication between providers, SDHC, and landlords
- Discussions on “Client Choice” and strategies to better lease up units
- These were not new activities – Just wanted to place more emphasis on activities and coordination of partners



The Results



Lessons Learned and Recommendations



Need to be able to use our data better and dig into metrics on households who are in "Housing Search" mode



Continue capacity building of providers – Act with a sense of urgency



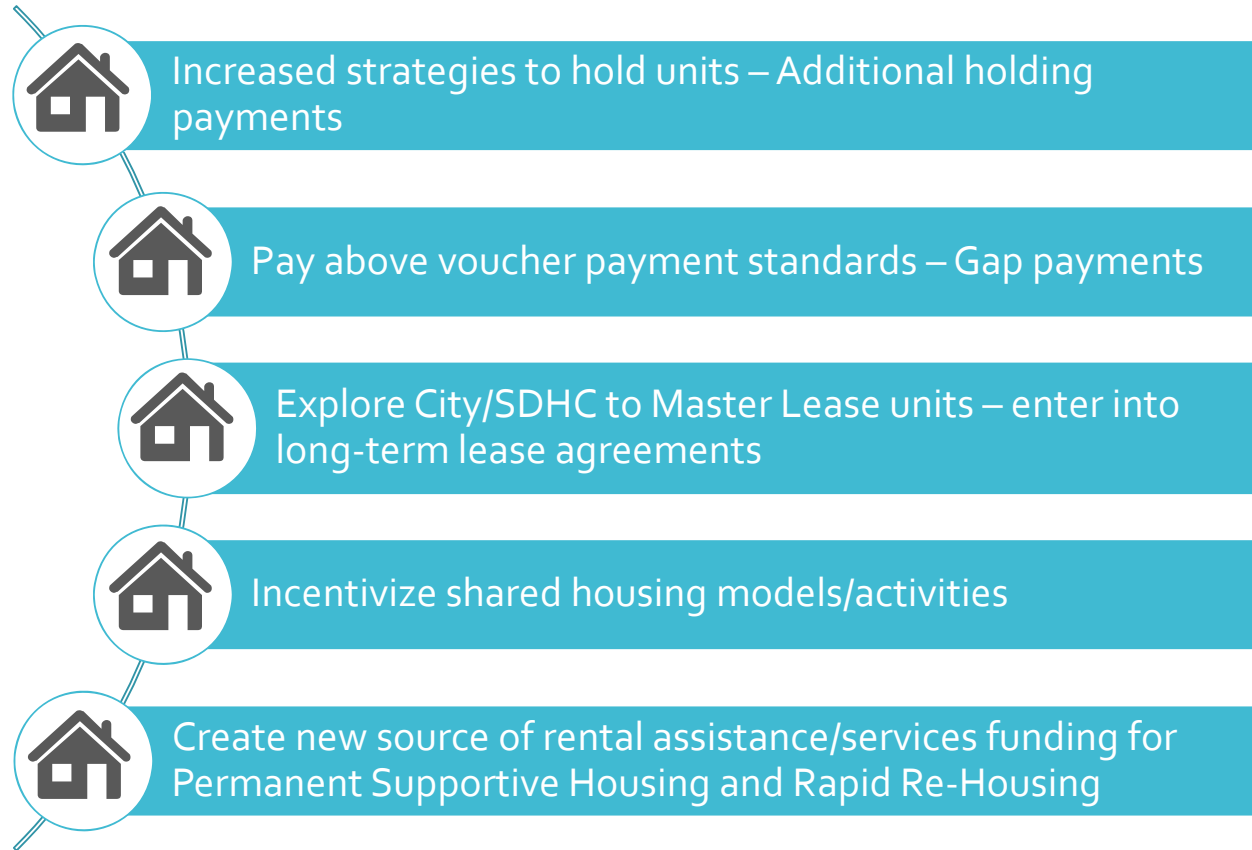
Having a central entity responsible landlord engagement is important - SDHC has done a great job with this in the City – Need to continue innovating and also think regionally



Need innovative strategies to impact tight and expensive rental market

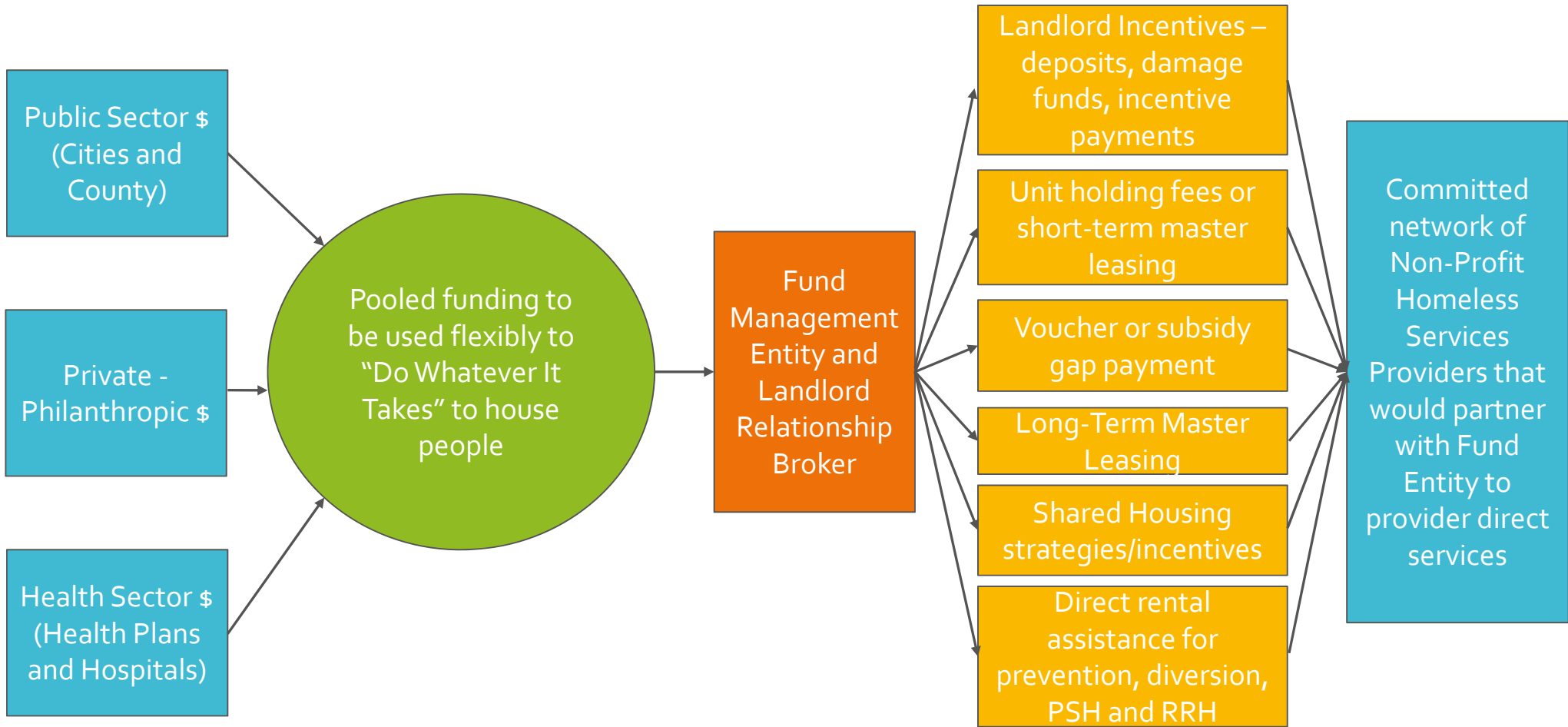
Flexible Housing Pool – Public/Private \$

Lessons Learned and Recommendations: Innovative Housing Strategies



Flexible Housing Pool

What could it look like in San Diego?



Cost Comparisons

Per Person Per Month Costs

Shelter
\$1,290
(\$43 per day)

VS

Hold Units
\$500-\$1,000
(one time fee)

Pay Above Standard
\$1-\$350

Master Lease
\$400-\$1,500

Shared Housing
0-\$500

Supportive Housing
\$1,500

Questions?

Kris Kuntz

Kris@lesardevelopment.com

